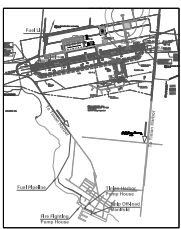


LEGEND	
	EXISTING Airport Rotating Beacon
	Lighted Wind Cone
	Anemometer
	Runway End Identifier Light
	Airport Reference Point
	Threshold Lights
	Runway Object Free Area
	Runway Obstacle Free Zone
	Runway Safety Area
	Building Restriction Line
	Holding Position Marking
	Paved Road
	Dirt Road
	Building (Existing)
	Building (Future)
	Airfield
	Runway Surface
	WWII Asphalt Pavement
	Fencing
	Airport Property Boundary
	Ground Contours (In Feet)
	Taxiway Annotation
	Future
	Survey Monument (NDS)
	Tie-Downs

EXISTING BUILDINGS/FACILITIES		
NO	DESCRIPTION	ELEV. (MSL)
1	Main Terminal	324.5'
3	Airport Maintenance/Cargo Facility	292.6'
5	ARFF	299.3'
7	Light Aircraft Hangar	301.3'
9	Electrical Vault Building	290.1'
11	Generator Building	293.5'
13	Aircraft Fuel Storage Area	292.5'
15	CPA Maintenance Storage	293.0'
17	NWS Satellite Feed	307.2'
19	Anemometer/Rain Gage (NDAA)	307.4'
21	Windcone	292.2'
23	Airport Rotating Beacon	358.0'
25	Segmented Circle/Lighted Windcone	269.5'
27	Supplemental Windcone	254.0'
29	Supplemental Windcone	287.5'
31	Water Reservoir Tank	336.0'

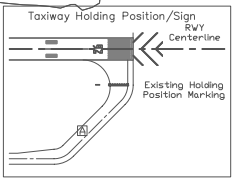
NOTE:
 1. No "Yearly Day-Night Average Sound" (LDN) noise contour data available for West Tinian Airport.
 2. The Survey Monument Disks are Set on top of a surrounding protective Mass of Concrete.



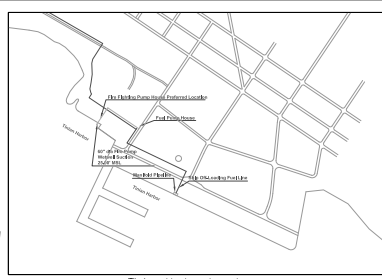
Existing RW-8 End
 Lat 14d 59' 49"
 Long 145d 36' 26"
 Elev. 236.616 Low Point

Existing RPZ
 1,000 X 2,500 X 1,750
 Approach Surface
 Req-341 / Actual-341
 1 Mile Min Visibility
 Dashed Fee Simple

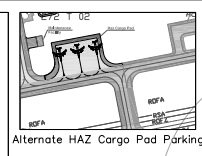
Fuel Line Detail
 Military Exclusive-Use Lease Area
 Vegetation



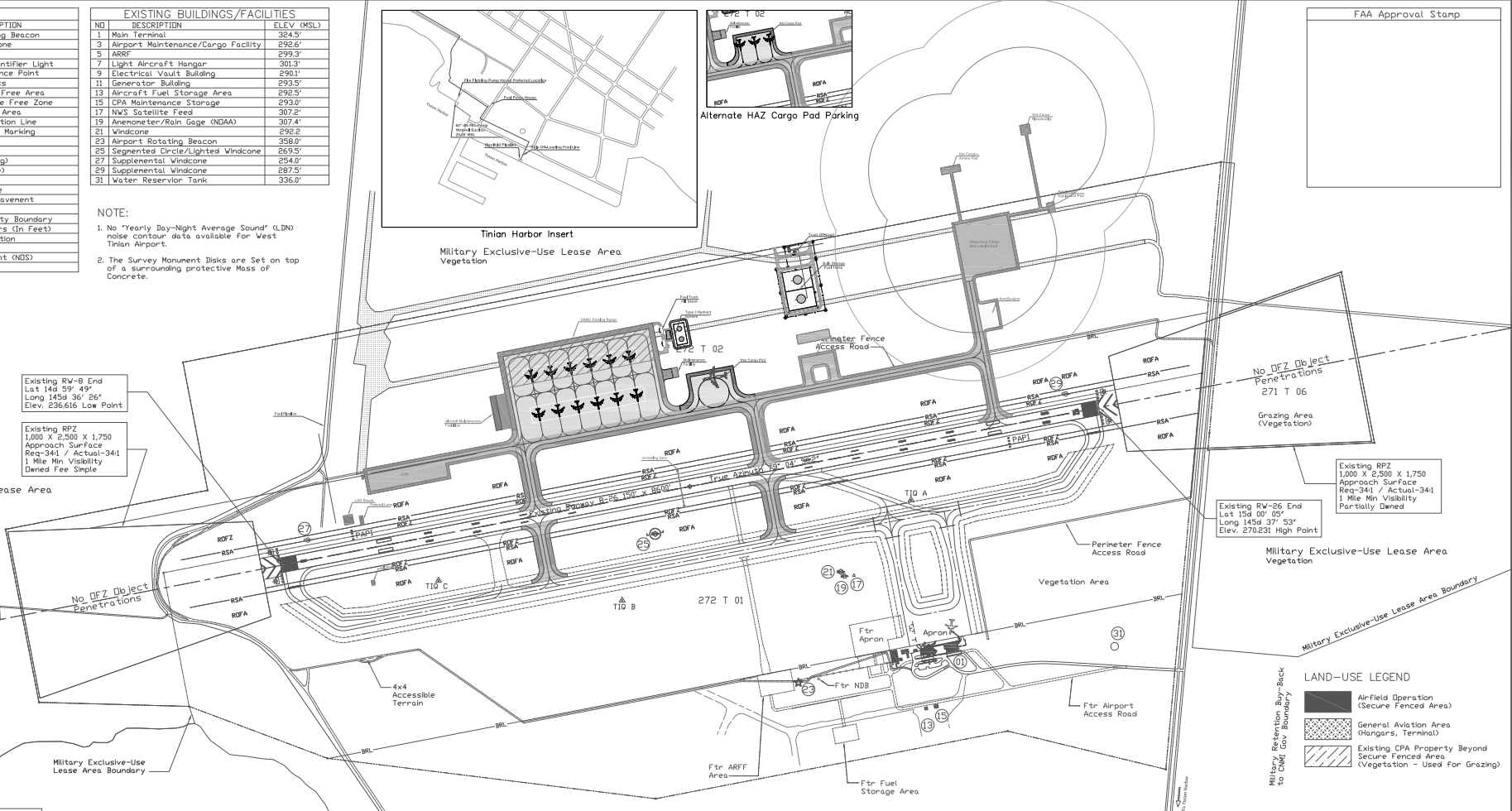
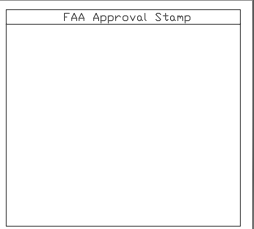
PHILIPPINE SEA



Tinian Harbor Insert
 Military Exclusive-Use Lease Area
 Vegetation



Alternate HAZ Cargo Pad Parking



No DFZ Object Penetrations
 271 T 06
 Grazing Area (Vegetation)

Existing RPZ
 1,000 X 2,500 X 1,750
 Approach Surface
 Req-341 / Actual-341
 1 Mile Min Visibility
 Partially Damed

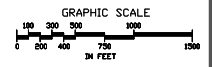
Existing RW-26 End
 Lat 15d 00' 05"
 Long 145d 37' 53"
 Elev. 270.231 High Point

LAND-USE LEGEND	
	Airfield Operation (Secure Fenced Area)
	General Aviation Area (Hangars, Terminal)
	Existing CPA Property Beyond Secure Fenced Area (Vegetation - Used For Grazing)

Military Retention Buy-Back to CMR Gov Remains

NO.	DATE	DESCRIPTION	BY
4	1/10/12	UPDATE GENERAL LAYOUT, ROTATED TO TRUE NORTH, DATA TABLES ADDED	CPA
3	10/10/97	CHANGED 8TH AVENUE RELOCATION	JCTA
2	9/19/97	GENERAL REVISION TO ALP DATED 03/08/95	JCTA
1	3/8/95	DIGITIZED EXISTING ALP DRAWN BY LEO A. DALY DATED JUNE 01, 1993	EFC

Military Retention Area (Buy-Back Remainder to CNMI Government)
 Used for Grazing (Vegetation)



MODIFICATION TO AIRPORT DESIGN STANDARDS							
STANDARD MODIFIED	RUNWAY	REQUIRED	EXISTING	DATE APPROVED	AIRSPACE CASE NO.	ACTION	
NO Modification to Airport Design Standard	N/A	N/A	N/A	N/A	N/A	N/A	

RUNWAY END COORDINATES (NAD 83)			
RUNWAY/ELEV. (MSL)	LATITUDE (D)	LONGITUDE (E)	
B	236.5'	14d 59' 49"	145d 36' 26"
26	230.2'	15d 00' 05"	145d 37' 53"

OBSTACLE FREE ZONE PENETRATIONS			
OBJECT	PENETRATION	DISPOSITION	
No DFZ Penetrations	N/A	N/A	

PROPERTY DATA				
PARCEL	PROPERTY INTEREST	ACREAGE	DATE OF ACQUISITION	FEDERAL PROJECT NUMBER
272 T 01	Airport (Fee Simple)	711	Sept. 23, 1999	N/A
272 T 02	Airport (Fee Simple)	591	Sept. 23, 1999	N/A
271 T 06	Airport (Fee Simple)	55	Sept. 23, 1999	N/A

SURVEY CONTROL STATIONS (NAD 83, NOS 1993)				
DESIGNATION	LATITUDE	LONGITUDE	ELEVATION	
T10 A	N 14d 59' 55.7270"	E 145d 37' 33.0407"	264.819'	
T10 B	N 14d 59' 45.4212"	E 145d 37' 02.5875"	250.637'	
T10 C	N 14d 59' 47.4479"	E 145d 36' 43.1988"	234.733'	

THRESHOLD SITING SURFACE PENETRATIONS			
OBJECT	PENETRATION	DISPOSITION	
No TSS Penetrations	N/A	N/A	

WEST TINIAN AIRPORT
COMMONWEALTH OF THE NORTHERN MARIANA ISLANDS, TINIAN MP 96952
AIRPORT LAYOUT PLAN (ALP), LAND USE AND PROPERTY MAP DRAWING

DRAWN BY: FRF APPROVED BY: EDWARD M. DELEON GUERRERO EXECUTIVE DIRECTOR, CPA	DATE: Jan. 2012 PREPARED BY: COMMONWEALTH PORTS AUTHORITY Engineering Department Telephone: 237-6518/19 Fax: 664-3533 Email: cpa.eng@cpa.com
--	---

SHEET 2 OF 8

FAA DISCLAIMER:
 THE CONTENTS OF THIS MEASUREMENTS REFLECT THE OFFICIAL VIEW OR POLICY OF THE FAA. ACCEPTANCE OF THIS MEASUREMENT BY THE FAA DOES NOT IN ANY WAY CONSTITUTE A WARRANTY OR GUARANTEE OF THE ACCURACY OF THE INFORMATION. THE USER SHALL BE RESPONSIBLE FOR VERIFYING THE ACCURACY OF THE INFORMATION. THE USER SHALL BE RESPONSIBLE FOR VERIFYING THE ACCURACY OF THE INFORMATION. THE USER SHALL BE RESPONSIBLE FOR VERIFYING THE ACCURACY OF THE INFORMATION.